

DH163

Rotary 3-Way Directional Valve



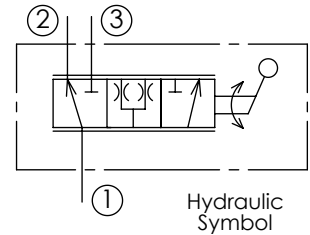
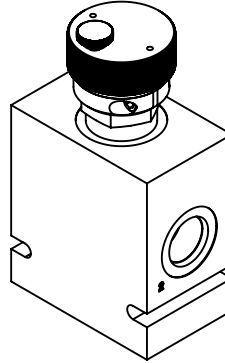
SOURCE
FLUID POWER

Function

- Rotary 3-way directional valve, manually operated, full open-crossover

Operation

- 3-way selector valve
- Thumb-knob locking screw for position locking
- Infinite positioning for proportional flow dividing circuits. Ideal for bulk product mixing applications when used with proportional flow dividing compensator
- Rotary spool operation allows high-flow capabilities.



Operating Pressure

- 3000 psi
- Consult factory for higher pressures

Flow Ranges (Based on 100 psi differential)

- 15 0-15 gpm (Equivalent to \varnothing .25 orifice)
- 20 0-20 gpm (Equivalent to \varnothing .35 orifice)
- 35 0-35 gpm (Equivalent to \varnothing .49 orifice)
- 50 0-50 gpm (Equivalent to \varnothing .56 orifice)

Internal Leakage

- 5 cu in/minute per 1000 psi

Construction

- Cage, body and spool: Steel, exposed parts plated
- Knob assembly: Anodized aluminum
- Standard line bodies are aluminum
- Steel bodies are available upon request

Seal Material

- Buna N and polyurethane standard
- Viton optional

Temperature

- -40 to 120°C

Cavity

- C 16-3 industry common cavity

Valve Installation Torque

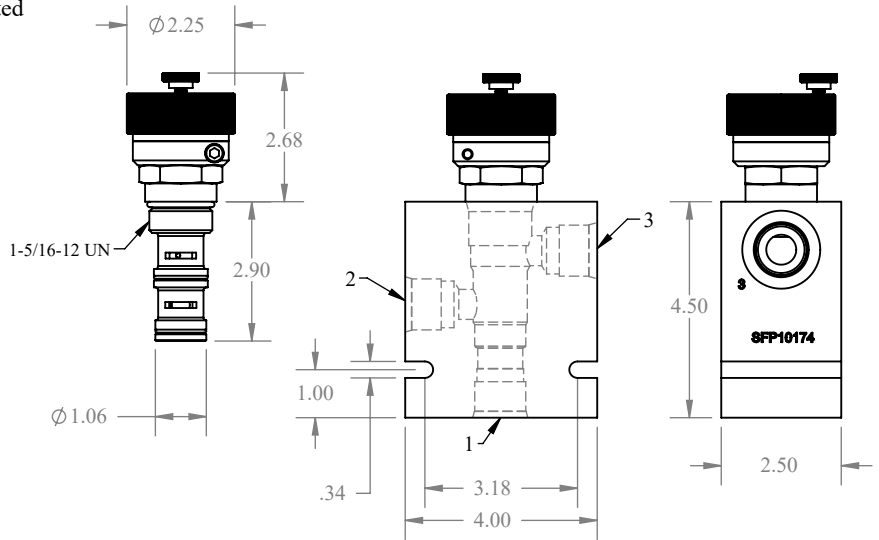
- 65 ft-lbs

Cartridge Weight

- DH163 cartridge only 2.0 lbs
- DH163 with aluminum body 4.9 lbs

Seal Kit

- SFP25662



DH163- [] []

Flow range:

- 15 0-15 gpm
- 20 0-20 gpm
- 35 0-35 gpm
- 50 0-50 gpm

Line body:

10174 SAE-12 ports