

# LV20

## High Flow Logic Valve



### Function

- Two Position, two-way main stage logic element with integral C8-2 industry common pilot cavity. Normally closed when pilot flow is blocked. Free flow from port 1 to port 2 when pilot flow is vented.

### Application

- Main stage logic element can be used as a high-flow unloading valve when used with a normally open or normally closed pilot solenoid cartridge, or as a high-flow relief valve when used with a proportional or mechanical pilot relief cartridge.

### Operating Pressure

- 3000 PSI maximum

### Flow

- 70 GPM

### Cavity

- C20-2 Industry Common Cavity. Pilot cavity is Industry Common C8-2, Piloted nose to side (1 to 2)

### Temperature

- -40° to 100° C

### Leakage

- 5 cu. in/min @ 1000 psi

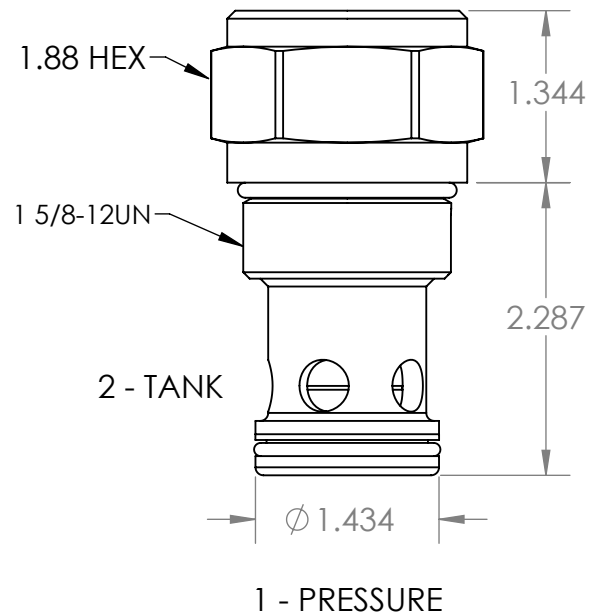
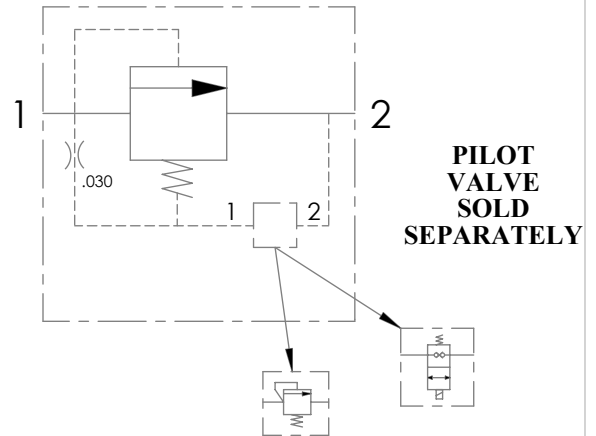
### Construction

- Steel
- Hardened and ground spool and cage
- Exposed parts plated

### Available Options

Consult Factory for details

- Solenoid pilot
- Pilot relief
- Line Bodies



**Pilot valve options:**  
Consult factory or see reference sheet

### HOW TO ORDER:

LV20

**Spring options**  
02 20 psi  
06 60 psi  
10 100 psi

**Seal material**  
B Buna N  
V Viton

**Line body options:**  
10184 Standard line body, SAE #16 ports  
10184 LS Body with SAE #20 ports

Consult factory for other options